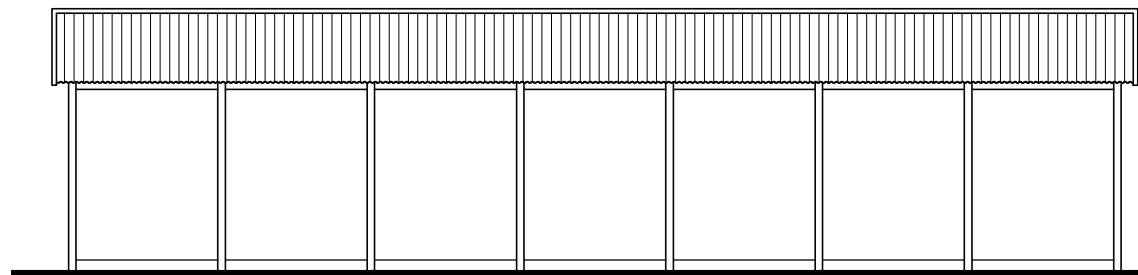
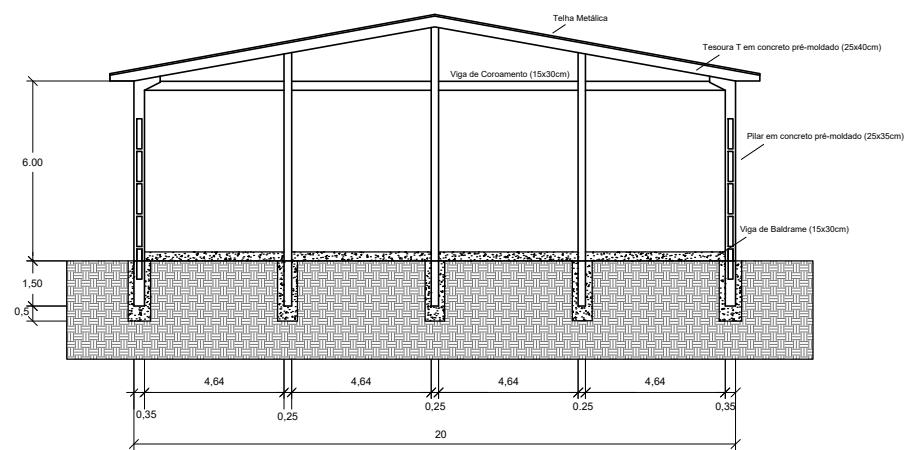


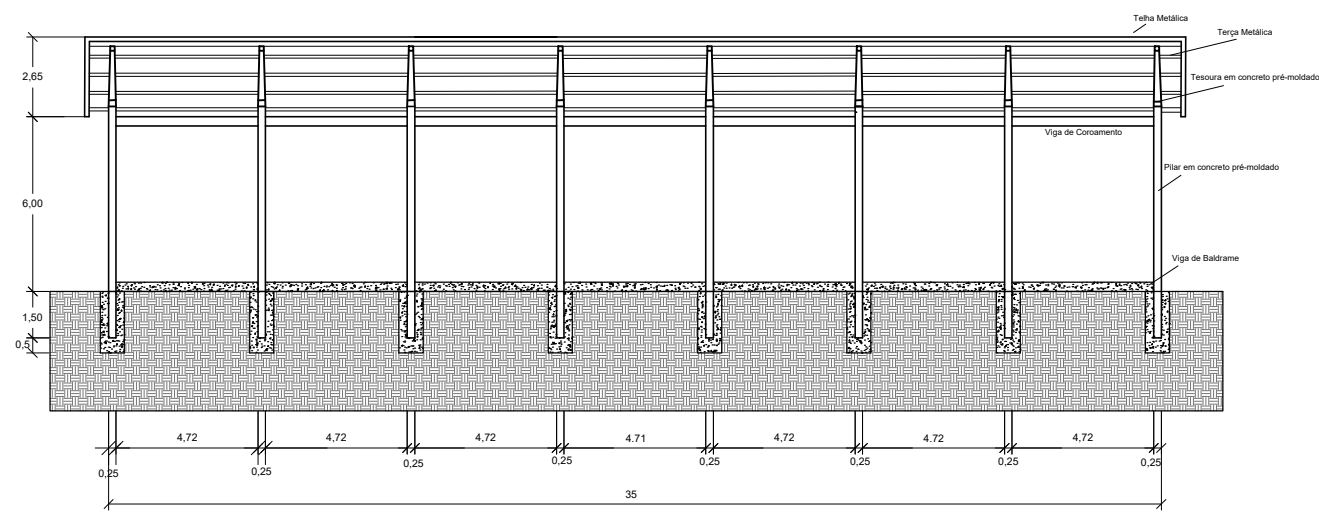
05 FACHADA PRINCIPAL
esc. 1:250



06 FACHADA LATERAL
esc. 1:250



07 CORTE AA
esc. 1:250



08 CORTE BB
esc. 1:250

PREFEITURA MUNICIPAL DE COLORADO		
QUADRA COBERTA Vila Padre Osmari		
PROPRIETÁRIO: PREFEITURA MUNICIPAL DE COLORADO		
RESP. TÉCNICO PROJETO ARQ. ENG. ANA LUIZA MILANESE - CREA/RS 223934		
ENDEREÇO: Rua Castro Alves, Vila Padre Osmari - Colorado/RS		
QUADRA: 61	ÁREA: 700 m ²	PRANCHA Nº: 03
DATA: Fev/2020	ESCALA: 1/250	